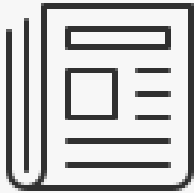




IST Infrastructure Project Bulletin

The Blueprint



Welcome to The Blueprint — a monthly bulletin from the IST Infrastructure Project team designed to keep you connected to the resources you need and updated on all things project-related. In this issue: an in-depth look at Christ-Centered Ministries' work with communities to ensure successful integration of its community-based restoration residences, answers to all your collaboration questions, and more! But first, hot off the press ...

The Round 1 deadline is now extended to October 31st.

AHP remains ready to help applicants through the proposal submission process. Please contact us with questions or to request a PAC.

Did You Know???

Let's Talk Regional Collaboration!

DSH encourages regional models or partnerships between counties and service providers, especially for counties projected to need fewer than 6 IST allocated beds.

> What are the benefits?

- Cross-collaboration with new partners
- Leveraged resources and knowledge
- Shared responsibility for infrastructure dollars and liability
- More referral options
- Strengthened ability to combat NIMBY by combined community



- influence
- Bolstered ability to expand CBR services

> We are interested in collaborating — where do we to start?



Reach out to neighboring counties for potential partnerships.

> Great! We are ready to collaborate. Now what?

Discuss:

- Potential locations and programs
- Which county will be the Lead Applicant

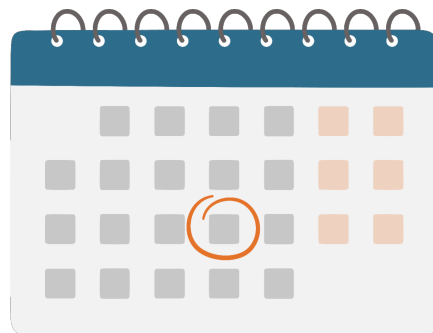
What to remember when submitting a collaborative proposal:

- The Lead County submits the proposal.
- Each county must submit 5 letters of support.
- The Lead County will receive and administer grant funds for the project.

Schedule a pre-application consultation (PAC) with your county's assigned AHP Grantee Liaison to discuss your options.

[Contact Us](#)

Event Calendar



Office Hours

July 9 & 23, 2024 - 12:00 p.m. PDT

[Register for Event](#)

Hope to see you there!

You Work Hard to Support Your County We'll Work Hard to Support You

The IST Team offers a range of resources, tools, and opportunities necessary to get infrastructure projects off the ground.

Need a 1:1 conversation?

Register for a **Pre-Application Consultation (PAC)** or book directly with your grantee liaison.

Did you miss Office Hours? Not to worry – you can find the link to past office hours on our website **Resource** page.



Answers to many common questions can be found on our **Frequently Asked Questions** page.

If you don't see an answer to your question, help is available through the **IST Infrastructure Project Support Desk**.

The IST team is committed to providing the highest level of customer service and to addressing every question or request promptly.

Contact the Support
Desk

NIMBY? Not in His Back Yard!



Christ-Centered Ministries works with communities to manage successful community-based restoration programs in

What Makes a CCM CBR Home?

Dr. Vaughn believes that CBR homes should be small, not visibly different from the surroundings, and stay clean inside and out. Inside, CCM sets up home-like settings, “dignity by design,” as Dr. Vaughn calls it. All residences have private space for individuals, and communal areas where people can be together and learn how to live within a community.

LA County.

For the last seven years, **Christ-Centered Ministries** (CCM) has served the IST population in Los Angeles County as part of the Felony Incompetent to Stand Trial (FIST) and Misdemeanor Incompetent to Stand Trial (MIST) programs. The organization manages 13 community-based restoration (CBR) facilities across LA County. CCM Founder, Dr. Troy Vaughn, says it is critical to work with communities to foster acceptance and diminish stigma. He says the key to establishing a successful CBR facility is to “make sure you select the right communities, do your work upfront with the community, make sure that people are ... compliant, and work very closely.”

Doing the Work “Upfront”

Before opening a home in a neighborhood, the CCM team attends community meetings and encourages community members to be part of the planning. Next, CCM and the community representatives draw up an agreement that allows the CBR homes to successfully integrate into the community as a respectful neighbor. Essential elements of the agreement are noise abatements and a timely response by CCM to any issues. Dr. Vaughn says CCM works hard to “honor those agreements throughout the tenure of our stay in that community, which we hope would be for quite some time.” CCM has never been asked to leave a community.

While in the home, individuals are treated by clinicians and psychiatrists, visit with peer specialists, learn new skills, and are cared for by staff 24/7. Other activities include individual and group therapy, exercise, and excursions in and around the community. Along with CCM team members, residents go for neighborhood walks and participate in community events such as block parties and outdoor activities. If an individual in a CBR home demonstrates a need for a higher level of care than offered in house, Dr. Vaughn looks again to the community. CCM has built a matrix of partners that provide step-up and step-down services.

Dr. Vaughn emphasized the number of opportunities available through programs such as the DSH IST Infrastructure Project, saying, “My encouragement is to those county departments that are seeking to move in this direction to support community-based organizations...because we really need it right now, and we cannot do it in isolation. We need each other to do this work.”

Dr. Vaughn shared the CCM CBR model with DSH IST Infrastructure Project Office Hours attendees on May 28th.

[View the session here](#)

“Let’s find capacity within ourselves to stretch out ourselves for the benefit of the person that’s waiting for us to create these opportunities.”

- Dr. Troy Vaughn, Christ-Centered Ministries

Team Spotlight

Jennifer Christie supports 16 counties for the IST Infrastructure Project.

Jen is one of our four Grantee Liaisons. She has over 20 years of experience in criminal justice and behavioral health and has been providing training and technical assistance for nearly a decade!

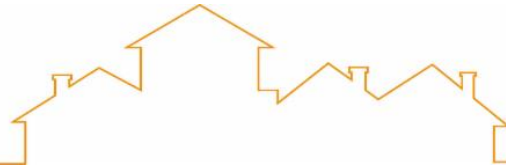


Jennifer Christie

Jen supports Calaveras, Imperial, Lake, Madera, Marin, Merced, Napa, Riverside, Sacramento, San Diego, Santa Clara, Santa Cruz, Shasta, Siskiyou, Solano, and Yolo Counties.

She and the rest of the AHP IST Team are here to support you. Need technical assistance?

**Book a Meeting
Today!**



Advocates for Human Potential | 131 N. El Molino, Suite 100 | Pasadena, CA 91101 US

[Unsubscribe](#) | [Update Profile](#) | [Constant Contact Data Notice](#)



Try email marketing for free today!