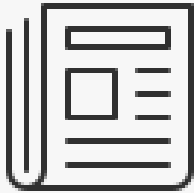




IST Infrastructure Project Bulletin
The Blueprint



Welcome to The Blueprint— a monthly bulletin from the IST Infrastructure Project team designed to keep you connected to the resources you need and updated on all things project-related. In this issue: the benefits for counties and community-based organizations (CBOs), setting up a designated county contact, and how to get the support you seek. You can also find quick links to contact us, find answers to your questions, sign up for Office Hours and more!

Did You Know???

When Counties and CBOs Work Together Everyone Wins!

> Benefits

For Counties Working with CBOs

- Shared responsibility for community members and facilities
- Reduced burden on county staff capacity
- Expanded continuum of care beyond county agencies
- Existing community connections to help combat community support issues, aka NIMBY

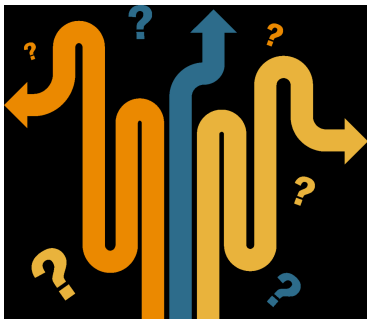
For CBOs Working with Counties

- Access to infrastructure assets and funds to assist community



- Increased capacity and expanded services
- Added jobs within the community
- More collaboration with county entities

> Where to Start



County wanting to partner with a CBO

- Apply as the lead and subcontract with a CBO and/or
- Endorse a CBO and execute an MOA for services.

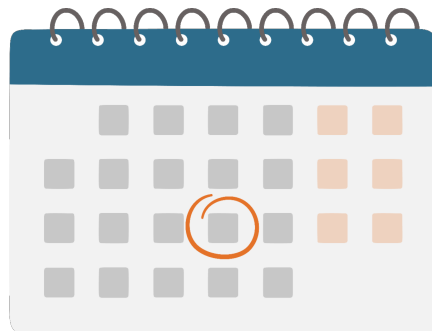
CBO wanting to partner with a county?

- Contact county representatives to start an MOA.

Counties and non-county entities can collaborate on the IST Infrastructure Project. Contact us to learn more.

Contact Us

Event Calendar



Office Hours
June 11 & 25, 2024 - 12:00 p.m. PDT

Register for Event

Hope to see you there!

You Work Hard to Support Your County We'll Work Hard to Support You



The IST Team offers a range of resources, tools, and opportunities necessary to get infrastructure projects off the ground.

Resources

- [Register For A PAC](#)
- [Bookings With Your Grantee Liaison](#)

Start with **IST Support Desk** where help is available in several ways. If a question is straightforward, it may be answered by email. If the subject is more complex, scheduling a Pre-application Consultation (PAC) or Technical Assistance (TA) call can be helpful. Here's the difference:

- **A Pre-application Consultation (PAC)** provides assistance before an application is formally submitted. This option allows individuals to talk with a professional who can guide them through the application process and answer any questions about the grant program.
- **A Technical Assistance (TA)** call may be in order for more in-depth support from our team of experts in addressing a specific case or complex situation.

The IST team is committed to providing the highest level of customer service and to addressing every question or request promptly.

Contact the Support
Desk

Designated County Contact — Is That You?



DSH has asked that each county name a primary contact for all communication related to the IST Infrastructure Project. The goal is to reduce confusion and make it easier to foster productive partnerships.

The designated contact:

- **Serves as** the main point of communication for non-county entities seeking to collaborate with the county on the IST Infrastructure Project.
- **Oversees** the timely and efficient exchange of information and collection of resources necessary to apply — including the crucial letters of support.

Does that sound like you or someone else in your organization? Please let us know who we should reach out to by sending an email to IST@ahpnet.com.

Thank you for supporting the collective success of the IST Infrastructure Project!

Team Spotlight



Alisa Cutright-Thompson supports 16 counties for the IST Infrastructure Project —

Colusa, Contra Costa, Kern, Kings, Lassen, Mariposa, Mendocino, Nevada, Plumas, San Francisco, San Luis Obispo, Sierra, Sonoma, Sutter, Tulare and Yuba.

She is a dedicated Grantee Liaison and holds a real estate license to boot.

She and the rest of the AHP IST Team are here to support you. Need technical assistance?

**Book a Meeting
Today!**



California Department of
State Hospitals



Advocates for Human Potential | 131 N. El Molino, Suite 100 | Pasadena, CA 91101 US

[Unsubscribe](#) | [Update Profile](#) | [Constant Contact Data Notice](#)



Try email marketing for free today!